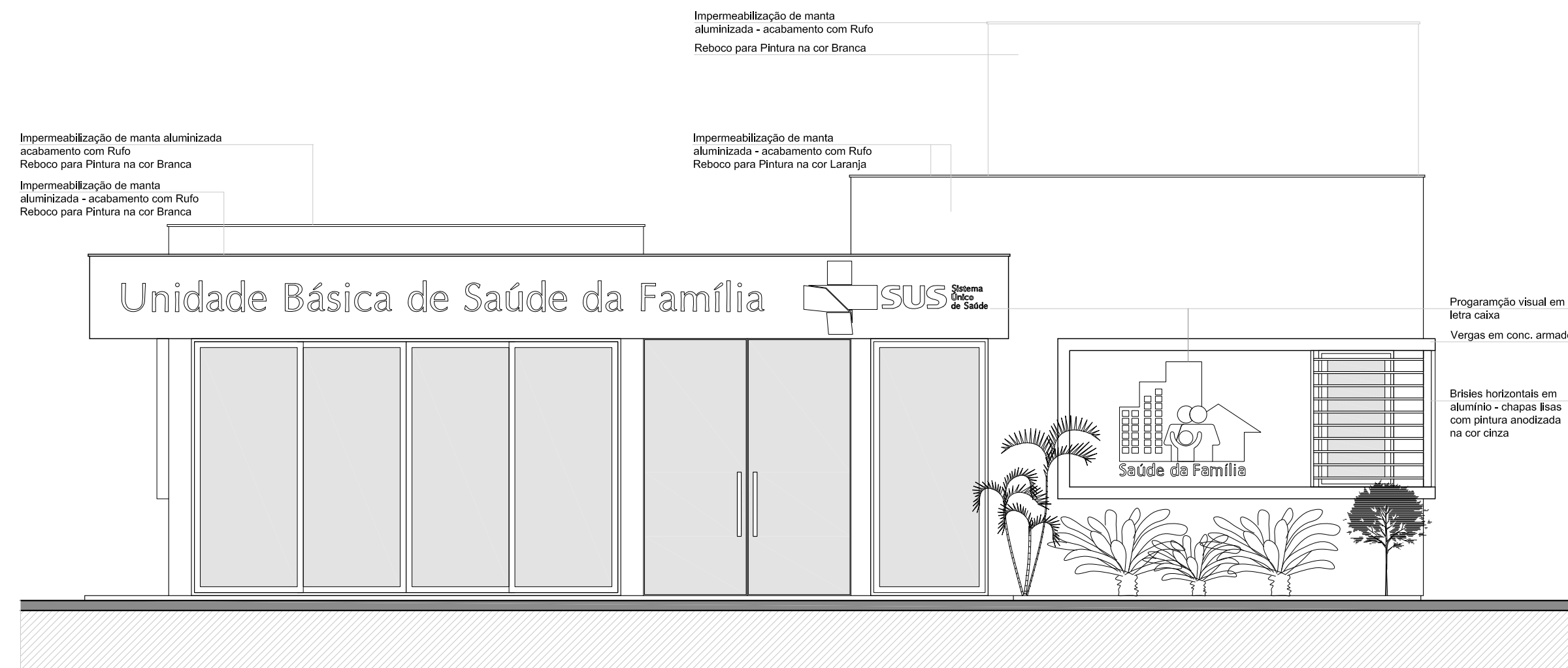
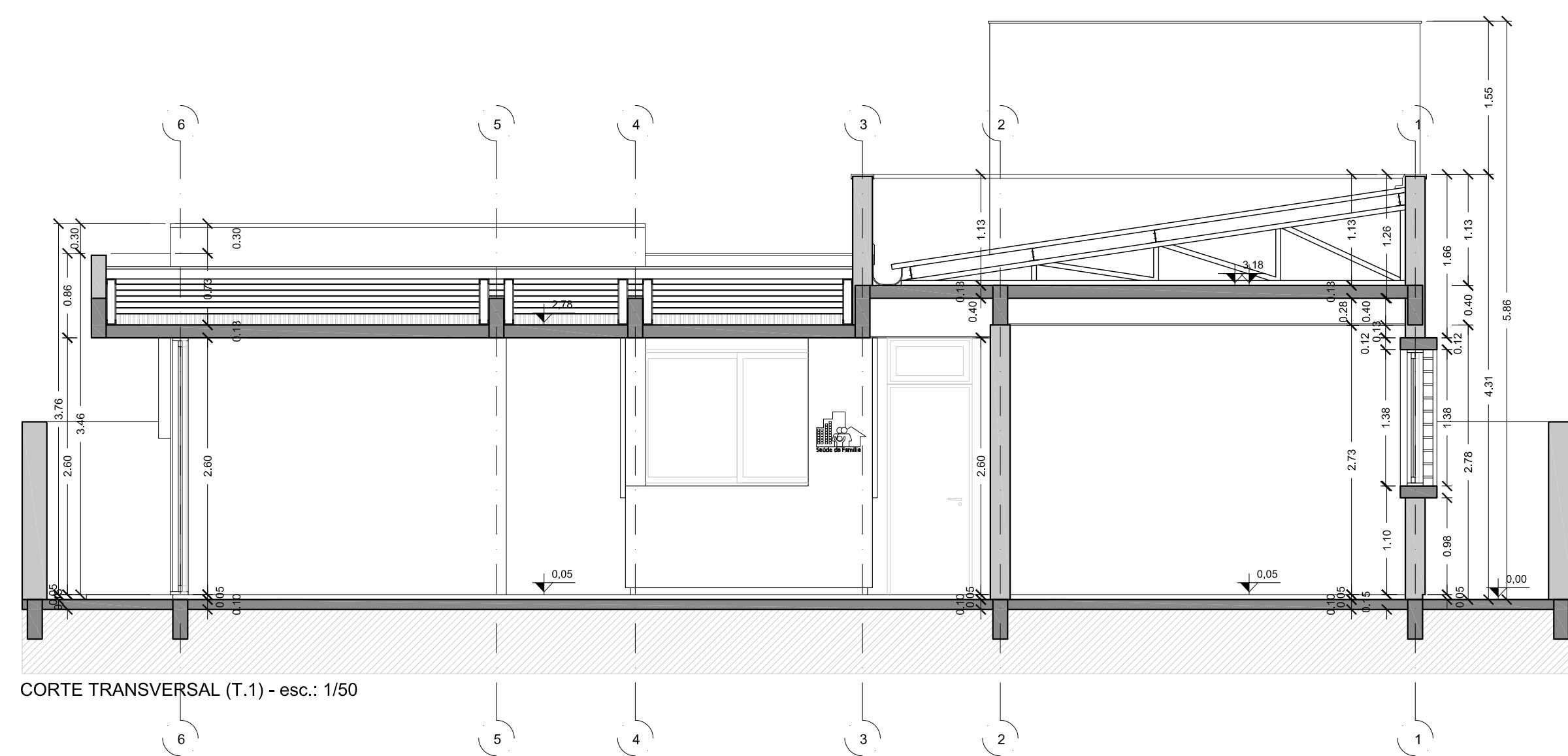


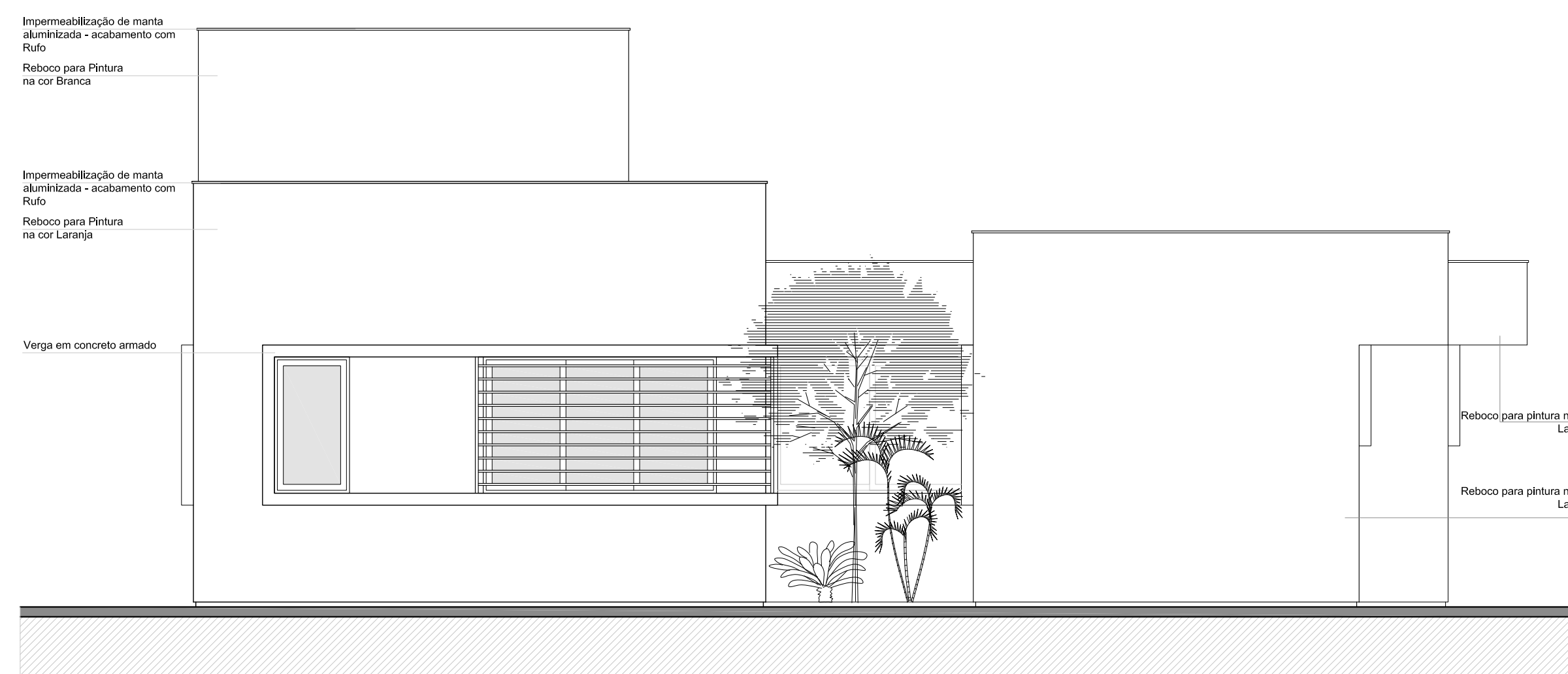
Elevações - esc.: 1/50



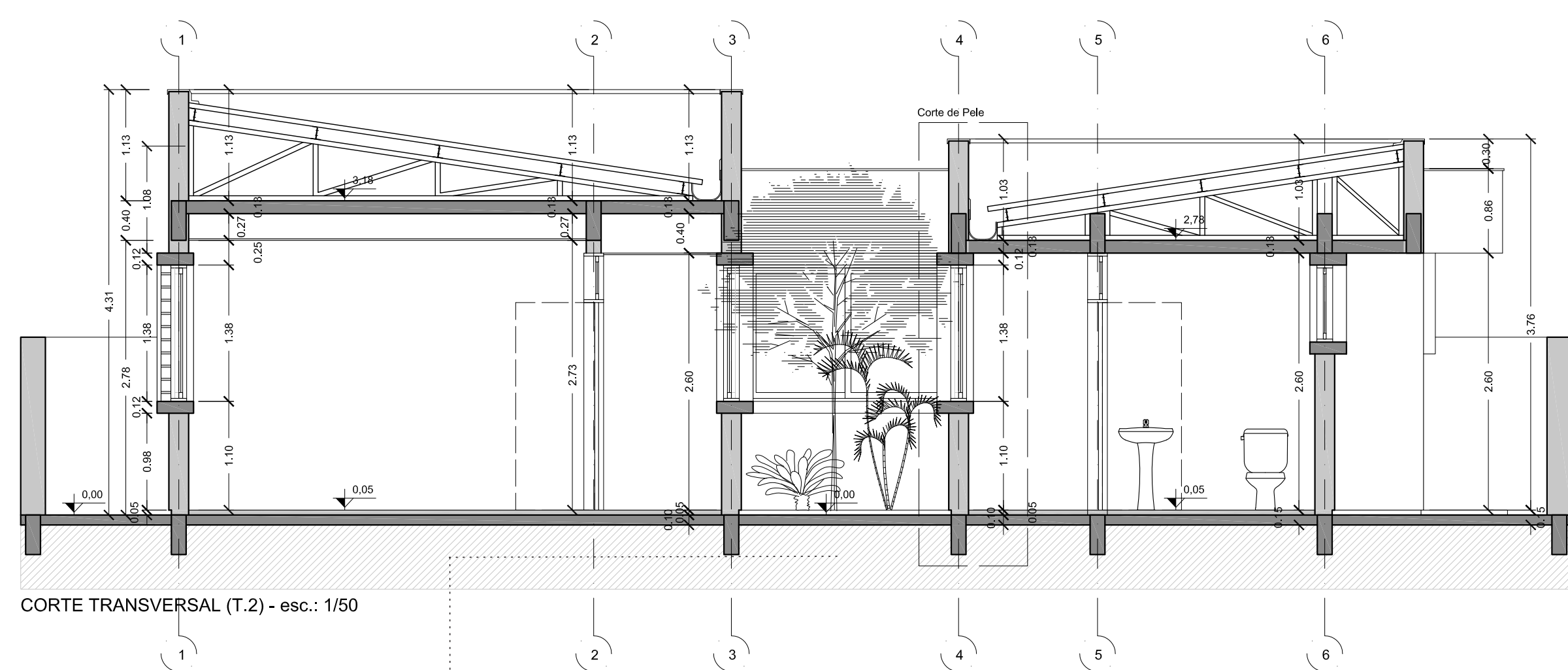
FACHADA FRONTAL - esc.: 1/50



CORTE TRANSVERSAL (T.1) - esc.: 1/50

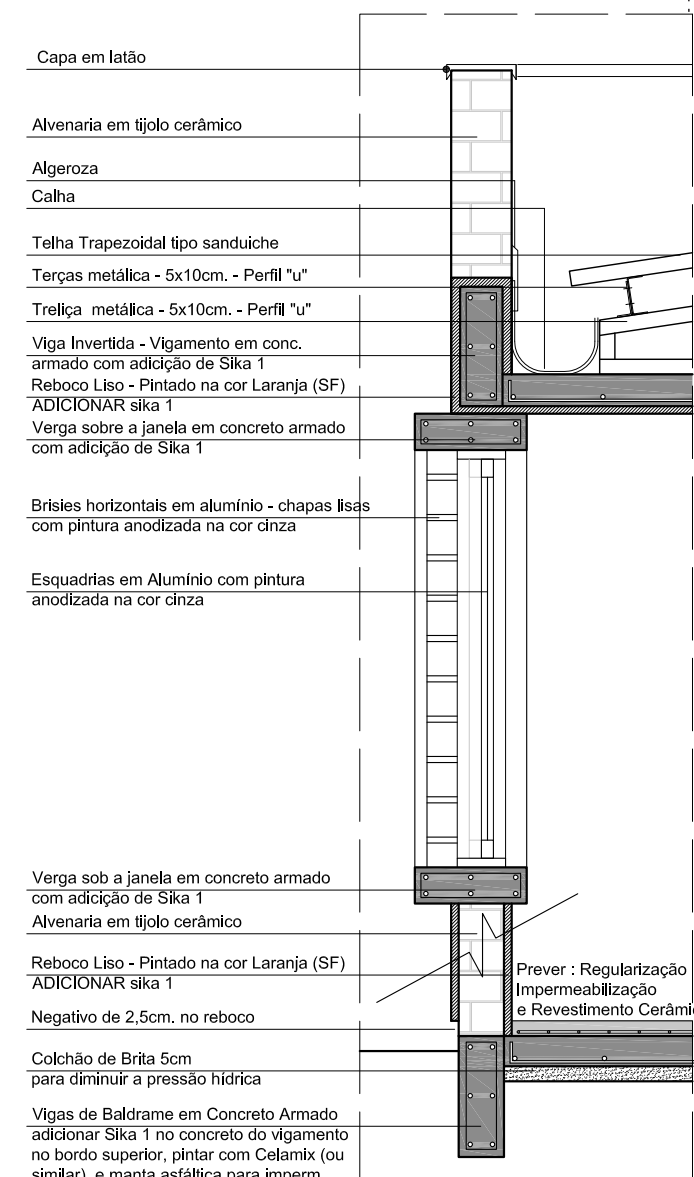


FACHADA FUNDOS - esc.: 1/50



CORTE TRANSVERSAL (T.2) - esc.: 1/50

Corte de Pele - esc.: 1/25



DETALHE SANITÁRIO PNE
VISTA ESQUEMÁTICA SANITÁRIO PNE
EXECUTAR CONFORME NBR 9050
ESC. 1/25

